



# N101

CAPACITIVE TOUCH DISPLAY



1000 nits High Bright



1280x800

Multi Points Touch



Rich Interfaces



ISO 7637-2



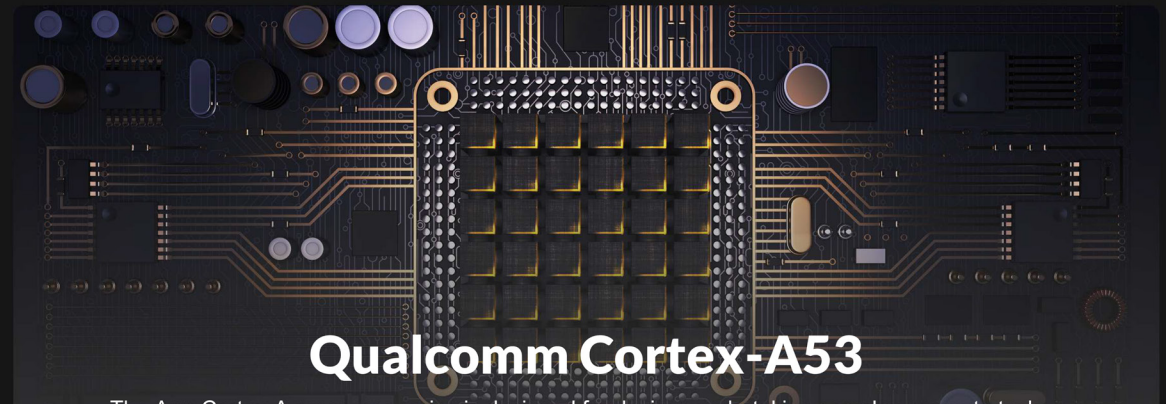
Android 9.0



PoE (optional)

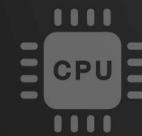
## 10.1" ANDROID PANEL PC

This is an Android 9.0 OS Panel PC with a 10.1" capacitive touch function, Power over Ethernet (PoE) and 1000 nits LED screen, which comes with rich interfaces and ABS plastic housing. This device can be connected through LAN, WiFi, Bluetooth and contains transmission interfaces (GPIO, RS232, etc) to be controlled by software.



## Qualcomm Cortex-A53

The Arm Cortex-A processor series is designed for devices undertaking complex compute tasks, hosting diverse operating system platforms and supporting multiple software programs. Built as a low-power processor with 64-bit capabilities, the Cortex-A53 processor is applicable in a range of devices requiring high performance in power-constrained environments.



### CPU

Qualcomm Cortex®-A53 64-bit 1.8GHz  
Octa-core processor



### Android OS

Android 9.0 operation system



### Memory

RAM: 2GB LPDDR3    RAM: 4GB LPDDR3  
ROM: 16GB eMMC    Or    ROM: 64GB eMMC



### GPU

Adreno 506



### Wi-Fi

802.11a/b/g/n/ac, 2.4 GHz & 5 GHz



### Bluetooth

2402MHz~2480MHz



### Cellular Network

LTE, HSPA+, UMTS, EDGE, GPRS, GSM



### GNSS

GPS / GLONASS



### NFC

ISO/IEC 14443 A&B, 15693



### PoE

Power supply by Ethernet port

\*Tips: Cellular Network, GNSS, NFC and PoE functions are optional items.

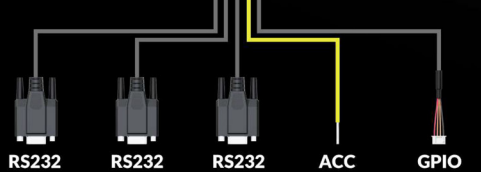


# 10.1" High-Bright Display

The 10.1" 16:10 LCD panel with 1280×800 HD resolution, 1000:1 contrast, 170° viewing angles, 1000 nits brightness, which offers outstanding viewing experience.



- DC Power In
- GPIO/ACC/RS232\*3
- Earphone Jack
- SIM Card Slot
- MicroSD Card Slot
- USB-C OTG
- USB-A Host
- LAN (PoE is optional)
- HDMI Output

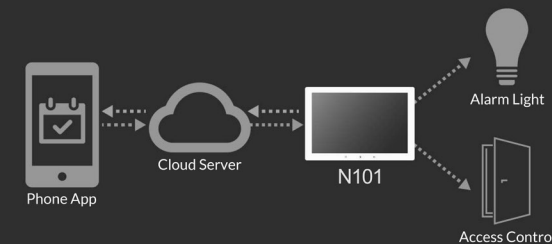
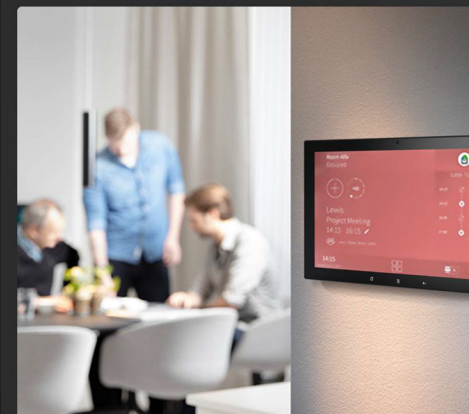


## GPIO/RS232 Extension Cable

To meet the requirements for multiple interfaces and saving space, panel pc is equipped with a unique expansion cable that brings together different interfaces in a single cable, for instance, RS232, GPIO, ACC, etc.

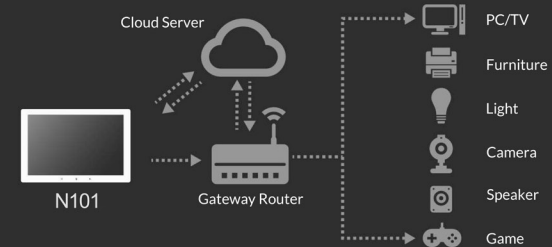
# Applications & Solutions

Incredible flexible to customize products according to customer demands. Multiple platforms and modules for optional. Through perfect combination of client-side sensor and software, we can help to realize various field applications.



## Conference Display

Panel pc can be used as part of a meeting room management system to provide statistics data on the utilisation of each meeting room over a period of time. To enable efficient use of meeting rooms and further improve economic efficiency.



## Smart Home Interface

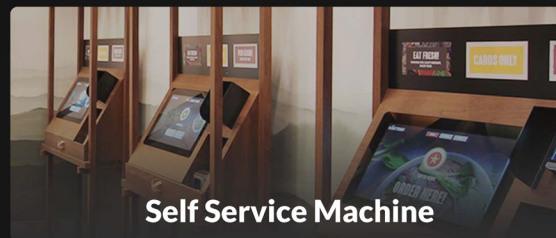
The smart home panel pc connects various devices in the home together through IoT technology, providing a full range of information interaction and even saving money on various energy costs.



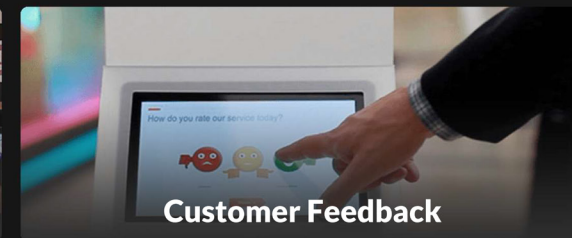
## Queuing System



## Digital Signage



## Self Service Machine



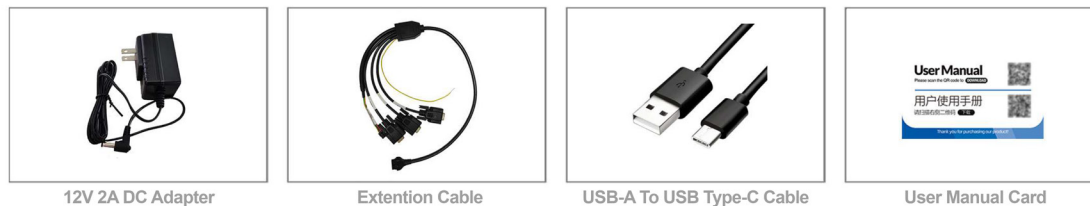
## Customer Feedback

# Specifications

SYSTEM	CPU	Qualcomm Cortex®-A53 64-bit Octa-core 1.8GHz processor
	OS	Android 9.0
	RAM + ROM	2GB LPDDR3 + 16GB eMMC, 4GB + 64GB are optional
PANEL	GPU	Adreno 506
	Sensors	Light Sensor (Auto Dimming)
	LCD	10.1" IPS, 1280×800, 1000 nit, 170°/170° viewing angle
INTERFACE	Touch Screen	Multi-point capacitive touch screen
	LAN	100M×1 (PoE is optional, 25W)
	GPIO	×4 (Input×2, output×2)
	COM	RS232×3
	HDMI	×1 Output, support up to 1080p
	SIM	×1
	Micro SD Card	×1, support up to 128GB
	USB	USB host×2, USB Type-C OTG×1
	Earphone Jack	3.5mm
	WIRELESS	Wi-Fi
Bluetooth		2402MHz~2480MHz
Cellular Network		Optional 3G/4G (LTE, DC-HSPA+, UMTS, EDGE, GPRS, GSM)
GNSS		Optional (GPS, GLONASS)
NFC		Optional
BUILT-IN	Front Camera	Optional, 5.0MP
	Speaker	×1
POWER	Power Supply	DC 9~36V
	Power Consumption	≤8W
OTHER	Dimension	249mm×166mm×32mm
	Weight	980g
	Environment	Operating Temp: -10°C~60°C (14°F~140°F) Storage Temp: -20°C~65°C (-4°F~149°F)



## ACCESSORIES



# Customized Service (NOT native parameters for N101)

## Development Platform



## Operation System



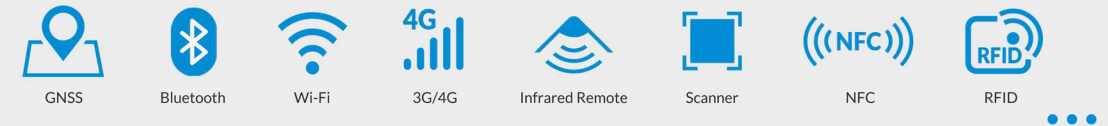
## Interface Types



### Wired Communication

RS232, RS422, RS485, Ethernet, CANBus, J1939, OBD-II, ACC, GPIO...

## Wireless Communication



## Screen Panel



## Appearance Structure

**Material** Iron, Stainless Steel, Aluminum, ABS Plastic...

**Processing** CNC, Die-cast, Sheet metal...

## Basic Appearance



## Application Environment



**neway**®

**Quanzhou NEWAY Industrial Limited**

Tel: +86-595-22519926 / Fax: +86-595-22519925  
General Info: info@neway.me / Sales Dept: sales@newayil.com